

extensive range
leading brands
design & install

SAFE & SECURE
ONLINE SHOPPING

australia wide authorised catering equipment distributor

Visit Australia's leading Commercial Catering Equipment website for instant quotes on the major catering equipment brands at very competitive prices.

www.mvocateringsolutions.com.au

Showroom locations

MVO Services
3 Toonburra Street
Bundaberg QLD 4670
Ph (07) 4152 7277

MVO Services
5/85 Beach Road
Hervey Bay QLD 4655
Ph (07) 4194 0722

Your requested document is included below



Model
TJ
Meat Mincers

Model TJ Meat Mincers

The Model TJ range of meat mincers - the small TJ12, the larger TJ22 the high capacity TJ32 offer efficient and quiet mincing thanks to extensive research and design of the cutting group.

The type of meat being minced can be changed very quickly as only a very small quantity of meat remains in the cutting group. The TJ range is equally at home in small butcher shops and the largest commercial kitchen.

All the TJ range feature:

- stainless steel and anodised aluminium construction to resist corrosion - the cutting group and funnels are made from high grade 18/8 stainless steel;
- all components radiused and reamed;
- Reduction gears running in oil bath;
- Reversing switch to clear blockages.

SPECIFICATIONS

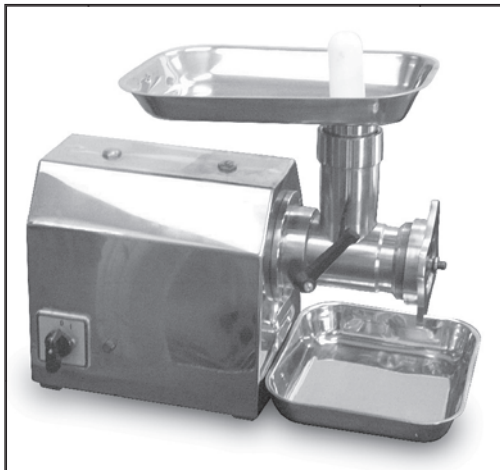
Dimensions (mm)	TJ12	TJ22	TJ32
Height (inc. funnel)	365	410	530
Width	200	240	270
Depth (inc. pan)	270	410	530
Weight (kg)	27	36	76
Power (Watts)	750	750	2200
Throughput (kg. per hour)	120	250	320



The TJ32 is the powerhouse of the range, with a throughput of up to 320kg per hour



The powerful mid-range TJ22 works hard in larger butcher shops and restaurants.



The baby of the family, the TJ12, is ideal for butcher shops and smaller restaurants

SALES AND SERVICE

SYDNEY: Ph: (02) 9838 0505; Fx: (02) 9838 0822
MELBOURNE: Ph: (03) 9888 7125; Fx: (03) 9888 7909
BRISBANE: Ph: (07) 3205 1077; Fx: (07) 3205 1144
ADELAIDE: Ph: (08) 8234 6277; Fx: (08) 8234 9033
PERTH: Ph: (08) 9204 3222; Fx: (08) 9204 3388
HOBART: Ph: (03) 6234 8300; Fx: (03) 6231 1291
DARWIN: Ph: (08) 8984 4125; Fx: (08) 8947 1900
WAGGA: Ph: (02) 6922 5836; Fx: (02) 6926 5657
FREECALL: 1800 353 844
EMAIL: info@briceaust.com.au



© Brice Australia Pty. Ltd.
 A.B.N. 71 413 589 669
 100% Australian owned and operated

Copyright © 2005 Brice Australia Pty. Ltd.
 www.briceaust.com.au

Note: Specifications subject to change without prior notice